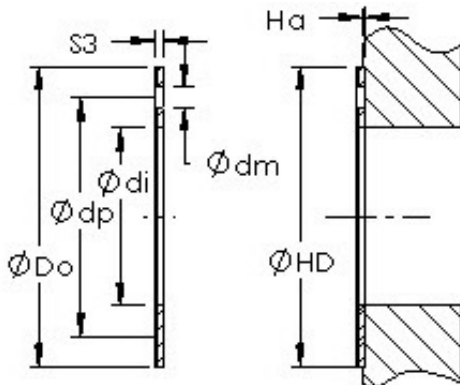




FML ske Manufacturing Co., Ltd



AST AST20 WC32 plain bearings

Bearing No. AST20 WC32

Bore Diameter	30 mm
Outer Diameter	54 mm
Bearing Type	thrust washer
Shaft Dia., Nominal (d)	30.0000
Bearing Outside Diameter, Nominal (Do)	54.000
Washer Inside Diameter, Nominal (di)	32
Washer Inside Diameter Tolerance (di tol.) - +0.25 / -0	+0.25 / 0
Washer Outside Diameter, Nominal (Do)	54
Washer Outside Diameter Tolerance (Do tol.) - +0 / -0.25	+0 / 0.25
Washer Thickness, Nominal (S3)	2
Washer Thickness Tolerance (S3 tol.) - +0 / -0.05	+0 / 0.05
Mounting Hole Dia. (dm)	4.000
Mounting Hole Pitch Dia. (dp)	43
Housing Counterbore Depth (Ha)	1.00
Housing Counterbore Depth Tolerance (Ha tol.) - +0.2 / -0.2	+0.2 / 0.2
Housing Counterbore Diameter, Nominal (HD)	54.000

AST20 WC32 Bearing 2D drawings and 3D CAD models



FML ske Manufacturing Co., Ltd

Housing Counterbore Diameter Tolerance (HD tol.)	+0.12 / 0
Material	Carbon steel shell with POM plastic liner