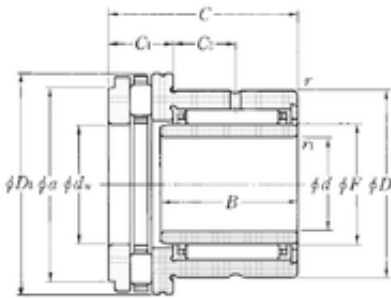
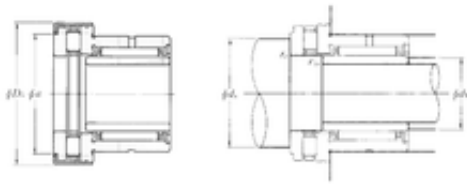




FML ske Manufacturing Co., Ltd



35 mm x 52 mm x 20 mm NTN NKXR40T2Z+IR35 × 40 × 20 complex bearings

Bearing No. NKXR40T2Z+IR35 × 40 × 20

NKXR40T2Z+IR35 × 40 × 20 Bearing 2D drawings and 3D CAD models

Bore Diameter	35 mm
Outer Diameter	61 mm
d	35 mm
d1	40 mm
F	40 mm
D	52 mm
D1	60 mm
D2	61 mm
B	20 mm
C	32 mm
ra1 max.	0,3 mm
a	55,7 mm
r min.	0,6 mm
r1 min.	0,3 mm
C1	13 mm
da min.	56 mm
db min	37 mm
ra max.	0,6 mm
C2	10 mm
Weight	0,281 Kg
Dynamic load rating radial (C)	25,9 kN
Dynamic load rating axial (C)	43 kN
Static load rating radial (C0)	52,5 kN
Static load rating axial (C0)	121 kN



FML ske Manufacturing Co., Ltd

(Grease) Lubrication Speed	1200 r/min
----------------------------	------------